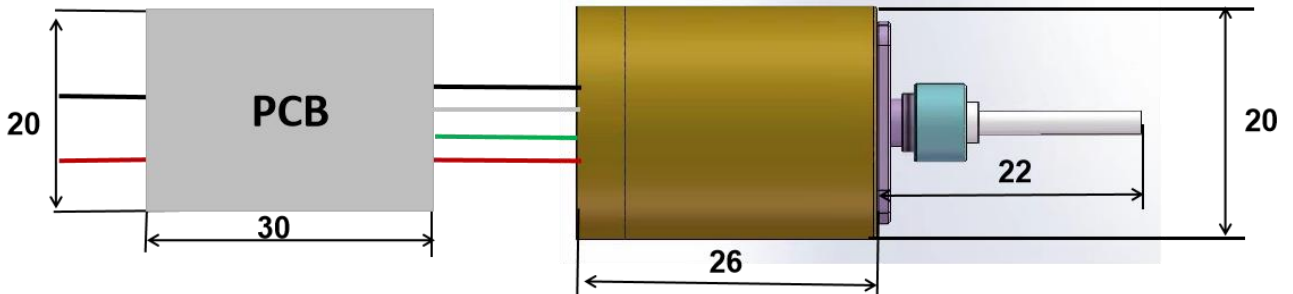


Y589D001-20x26-SMF

Features

- DPSS Laser
- 589nm Yellow Laser
- High Stability
- 4.2μm Single Mode Fiber Coupled

Dimensions (Unit: mm)



Specifications

Model Number		Y589D001-20x26-SMF		
Mechanical Specifications		Min	Typ	Max
Laser Head	Diameter (mm)	19.95	20	20.05
	Length (mm)	25	26	27
	Weight (g)	-	-	200
Housing Material		Brass		
Optical Specifications		Min	Typ	Max
Wavelength (nm)		586	589	592
Output Power after fiber (mW)		-	1	-
Power Stability (RMS 4 hours) ⁽¹⁾		-	+/- 3%	+/-5%
M ²			1.2	-
Output Power Mode		CW		
Laser Class		3R		

⁽¹⁾ at 25°C

Fiber Specifications	Min	Typ	Max
Fiber Type ⁽¹⁾	4.2um with 0.9mm loose tube		
Fiber Numerical Aperture	-	0.12	-
Fiber Length (m)	0.3	1	-
Fiber bending radius (mm)	15	-	-
Fiber Termination ⁽²⁾	FC/APC		
Electrical Specifications	Min	Typ	Max
Power Type	APC		
PCB Voltage (DC, V)	-	3	-
PCB Operating Current (mA) at 3V	-	600	700
Monitor Current (uA)	-	200	-
Housing Isolation	No		
ESD protection	No		
Wire Length (mm) ⁽³⁾	200 (+/-50)		
Wire Type ⁽³⁾	20AWG / 24AWG		
Reliability	Min	Typ	Max
Operating Case Temperature Range (°C) ⁽⁴⁾	24	25	26
Warm up Time (mins)	-	3	5
Storage Temperature (°C)	0	-	40
Environmental Humidity (RH, %)	5	-	85
Lifetime (hours) (MTTF)	5,000	-	-
RoHS Compliance Declaration	Yes		

⁽¹⁾ Single mode fiber. Other required fibers can be customized.

⁽²⁾ FC/PC, SMA905 can be customized.

⁽³⁾ Wire Length can be customized. 20AWG for LD wires. 24AWG for PD wires

⁽⁴⁾ Use suitable heat sink(with 5W heat dissipating capacity) to control the operating case temperature within this range.

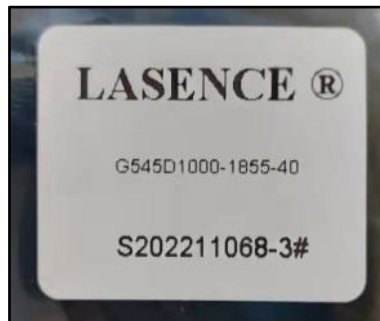
Remarks

- Product ID for placing orders: Y589D001-20x26-SMF
- Datasheet Version: 1
- No Photodiode
- Customer is responsible for suitable heat sinking
- Label on plastic bag (see example picture 2):
 - LASENCE®
 - Y589D001-20x26-SMF
 - Lasence Order Number - Module Number
 - Label Length: 30mm (+/-3mm); Width: 25mm (+/-3mm)
- Example of beam spot (see picture 4)
- Laser Beam Warning Label on module housing (see picture 1)
- Laser Marking on module housing (see picture 3):
 - Lasence Material Code
 - Lasence Order Number - Module Number

Picture 1



Picture 2



Picture 3



Picture 4

